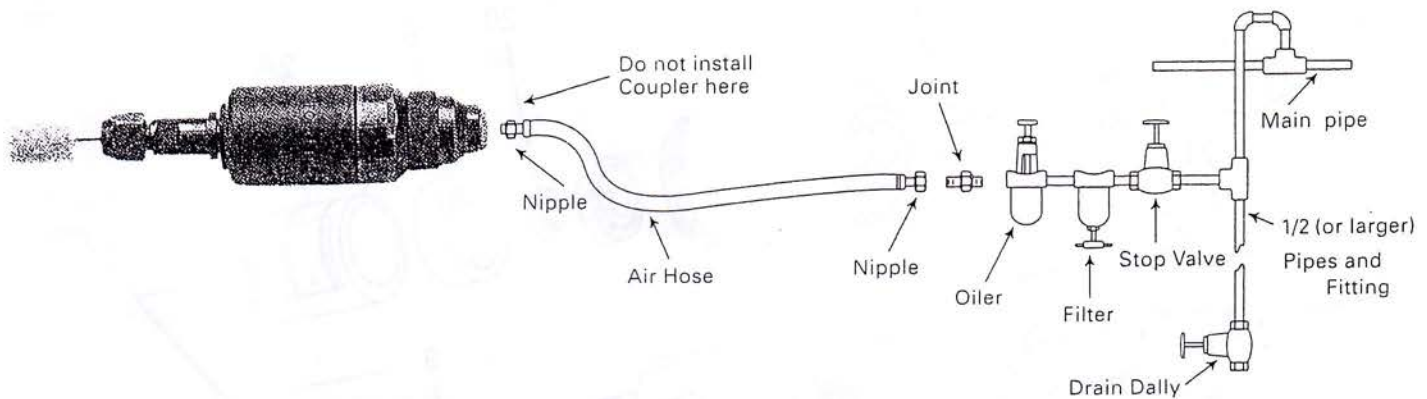


# MAINTENANCE INSTRUCTIONS CHUCK GRINDER MODEL TG-25Z II

# TOKU

TOKU PNEUMATIC PRODUCTS

## AIR HOSE AND HOSE CONNECTION:



## OPERATING INSTRUCTIONS

### "WARNING"

1. ALWAYS USE APPROVED EYE PROTECTION WHEN OPERATING THIS TOOL.
2. ALWAYS DIRECT EXHAUST AWAY FROM YOURSELF AND OTHERS IN THE TOOL.
3. DAILY-BEFORE USING TOOL. WITH NO WHEEL, CHECK SPINDLE SPEED, NEVER OPERATE FASTER THAN RATED SPEED. TIGHTEN SPINDLE ATTACHMENTS SECURELY.
4. ALWAYS USE ACCESSORIES IN GOOD CONDITION RATED AT OR ABOVE SPINDLE SPEED (18,000RPM AT 90 PSIG.)
5. ALWAYS USE APPROVED DUST MASK.
6. ALWAYS DISCONNECT TOOL WHEN NOT IN USE.

### LUBRICATION

To flush out gum and dirt:

1. Daily before and after each shift, pour a liberal quantity of gum solvent oil into air line.
2. Connect tool to air line. Operate tool.
3. Repeat procedure before storing.

### AIR SUPPLY (minimum requirements)

1. Compressor/2hp, 0.24m<sup>3</sup>/min at 0.6MPa (6kgf/cm<sup>2</sup>). 270ℓ air tank.
2. See diagram above for Pipe, Hose and Fitting size.
3. When using two or more hoses, all except leader hose should be 1/2" I.D. or larger.

FOR BEST OPERATION : Supply tool with 0.6MPa (6kgf/cm<sup>2</sup>) of clean, dry air. Higher pressure drastically reduces tool life and can void warranty.

### LOSS OF POWER / ERRATIC ACTION (possible causes)

1. Reduced compressor output.
2. Excessive drain on air line.
3. Moisture or restricted pipe, hose or fittings.
4. Improper size or poor condition of pipe, hose or fittings.
5. Dirt or gum deposits cut tool power. To correct this, check and clean air strainer, then repeat lubrication procedure. (If outside conditions are in order. disassemble tool, replace worn or damaged parts, clean, assemble and lubricate.)

### REPLACEMENT PARTS

Always use GENUINE TOKU TOOLS Replacement Parts.

When replacement parts are required, order Part No. and Description in the Parts List.



[www.air-allied.com.au](http://www.air-allied.com.au)

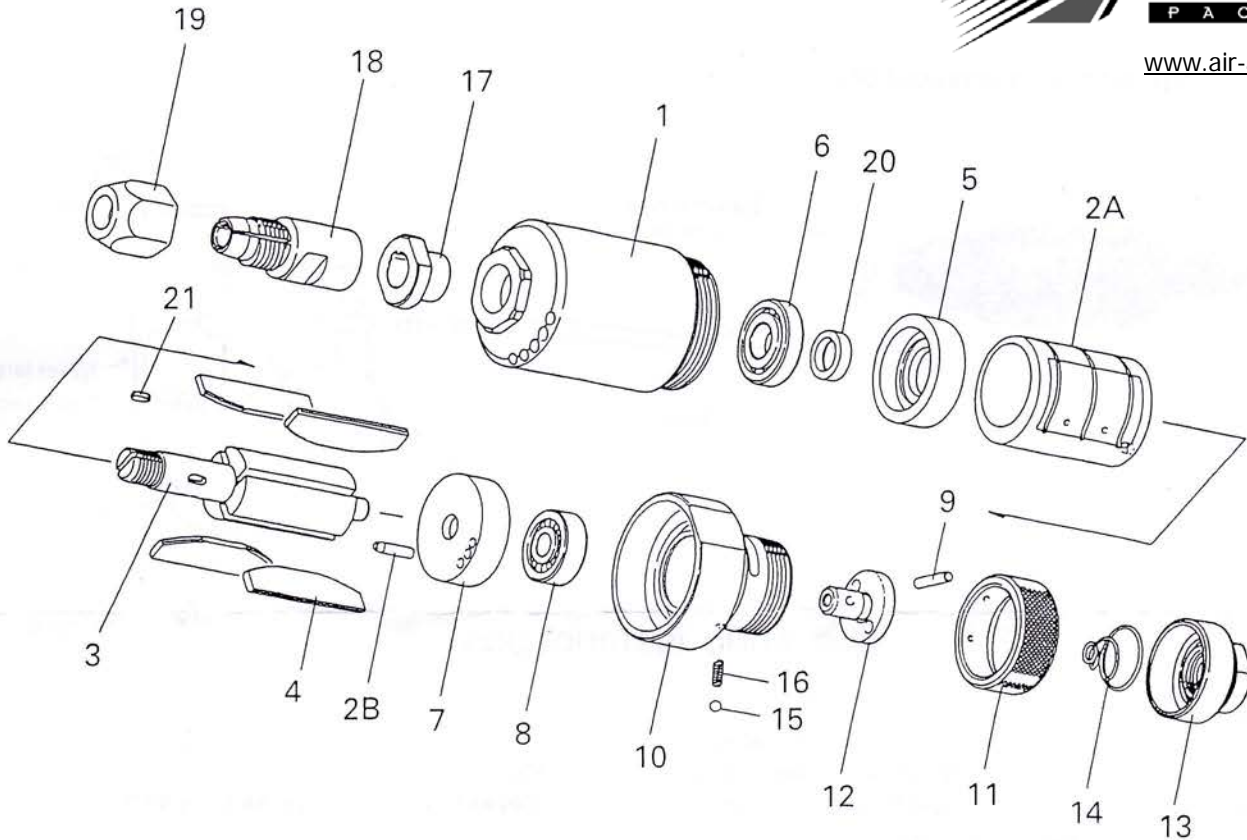
# CHUCK GRINDER MODEL TG-25Z II

# TOKU

TOKU PNEUMATIC PRODUCTS



[www.air-allied.com.au](http://www.air-allied.com.au)



## Parts List

Symbol No.	Parts No.	Q'ty Req'd	Description	Symbol No.	Parts No.	Q'ty Req'd	Description
1	Y31103010	1	CASE	11	Y31102110	1	THROTTLE VALVE HANDLE
2A	Y31110140	1	CYLINDER	12	Y31102120	1	THROTTLE VALVE
2B	Y3110202B	1	SPRING PIN	13	Y31102130	1	THROTTLE VALVE COVER
3	Y31110160	1	ROTOR	14	Y31102140	1	VALVE SPRING
4	Y31110180	4	VANE	15	Y31102150	1	STEEL BALL
5	Y31110200	1	FRONT PLATE	16	Y31102160	1	PLUNGER SPRING
6	Y31110210	1	BEARING (EE-3)	17	Y31103170	1	BEARING COLLAR
7	Y31110120	1	REAR PLATE	18	Y31110256	1	COLLET
8	Y50110160	1	BEARING (626Z)	19	Y31110260	1	COLLET NUT
9	Y31102090	1	THROTTLE VALVE PIN	20	Y31110190	1	ROTOR RING
10	Y31103100	1	CASE CAP	21	Y31103210	1	KEY